



Reaper Mackie

D700

Reaper Mackie

This guide shows you how to set up the D700 in Reaper. All pictures provided were taken with Reaper 6.73 but it is also applicable to most other Reaper versions.

All files mentioned in this guide can be found on the USB drive, in the Asparion Configurator installation folder or on our website.

If you are having trouble with anything in this guide, please contact us via our website www.asparion.de/contact and we'll immediately help you.

Instead of connecting the D700 via the Asparion plugin, it is also possible to connect the D700 via the built-in original Reaper function. Please note, that this method has some limitations.

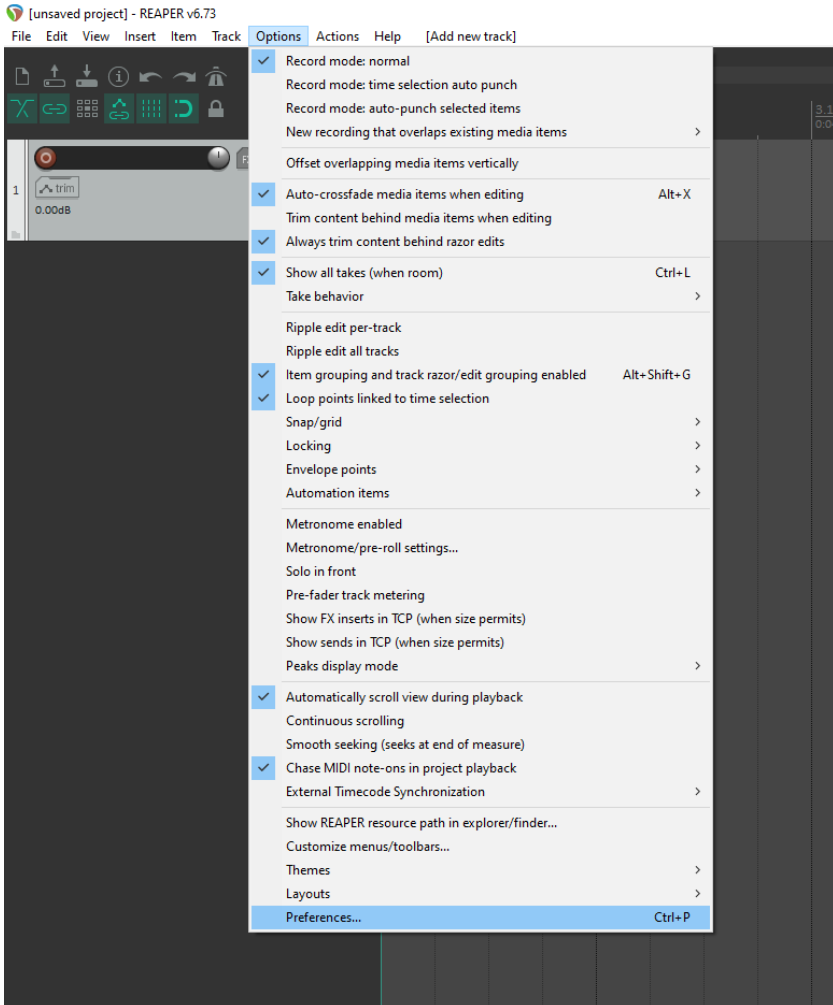
Step 1:

- **Select the Reaper preset**

How to select a preset is described in the main manual.

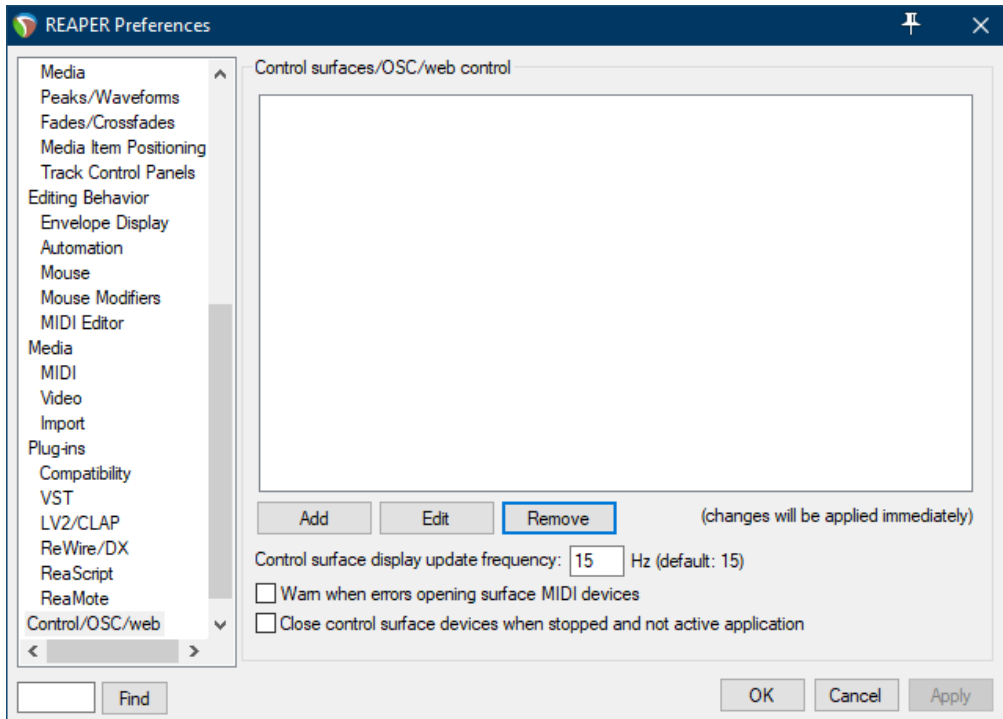
Step 2:

- Open Reaper
- Click on **Options->Preferences...**



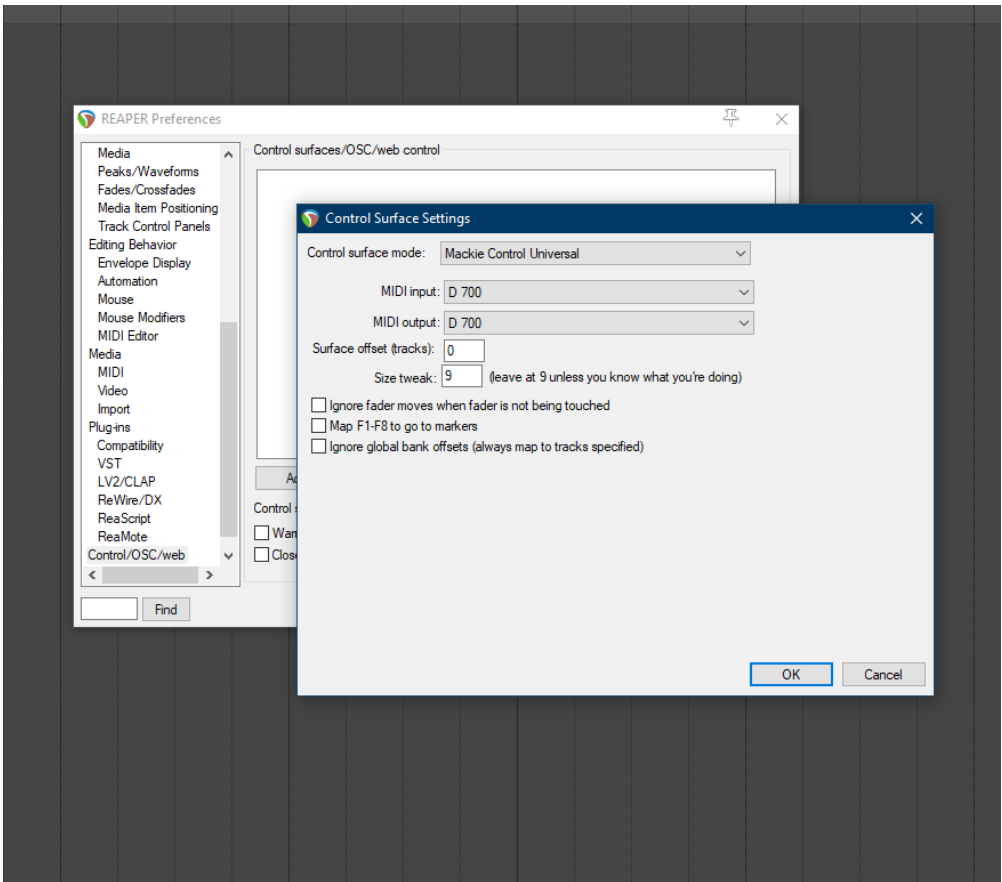
Step 3:

- Go to **Control Surfaces**
- Click **Add**



Step 4:

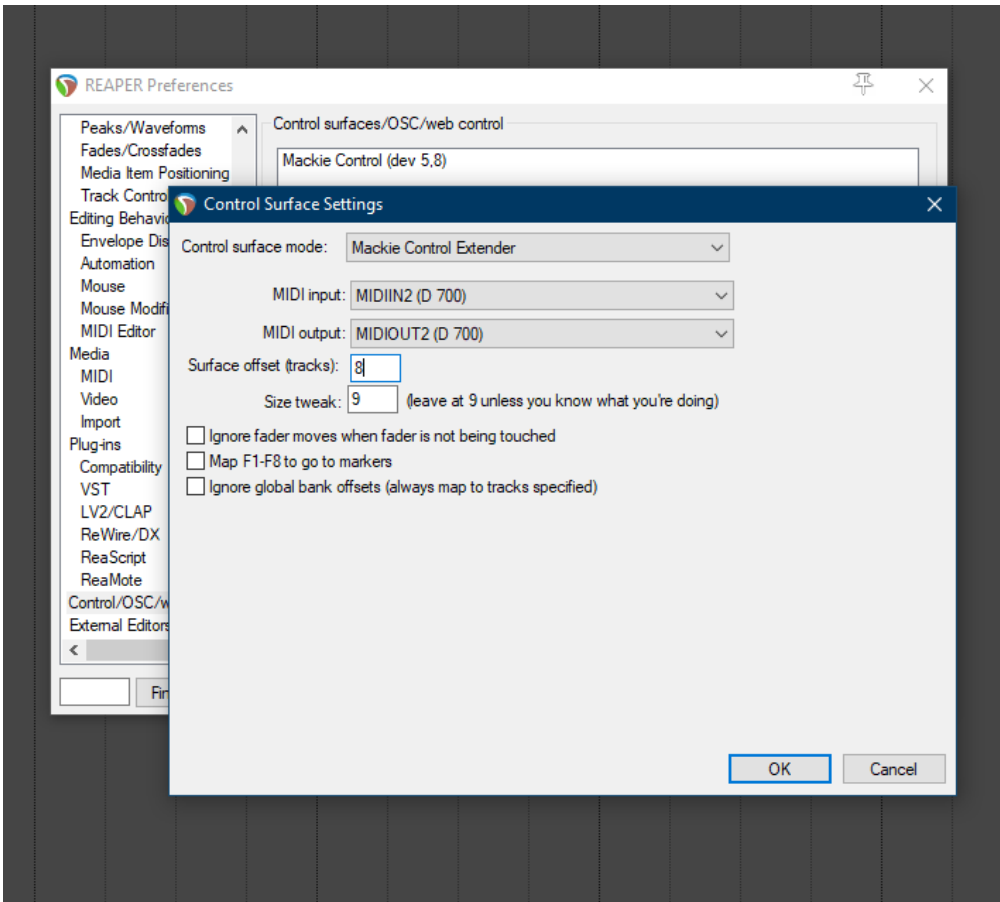
- Select **Mackie Control Universal** from the list
- Select **D700** as shown below



Step 5: (optional)

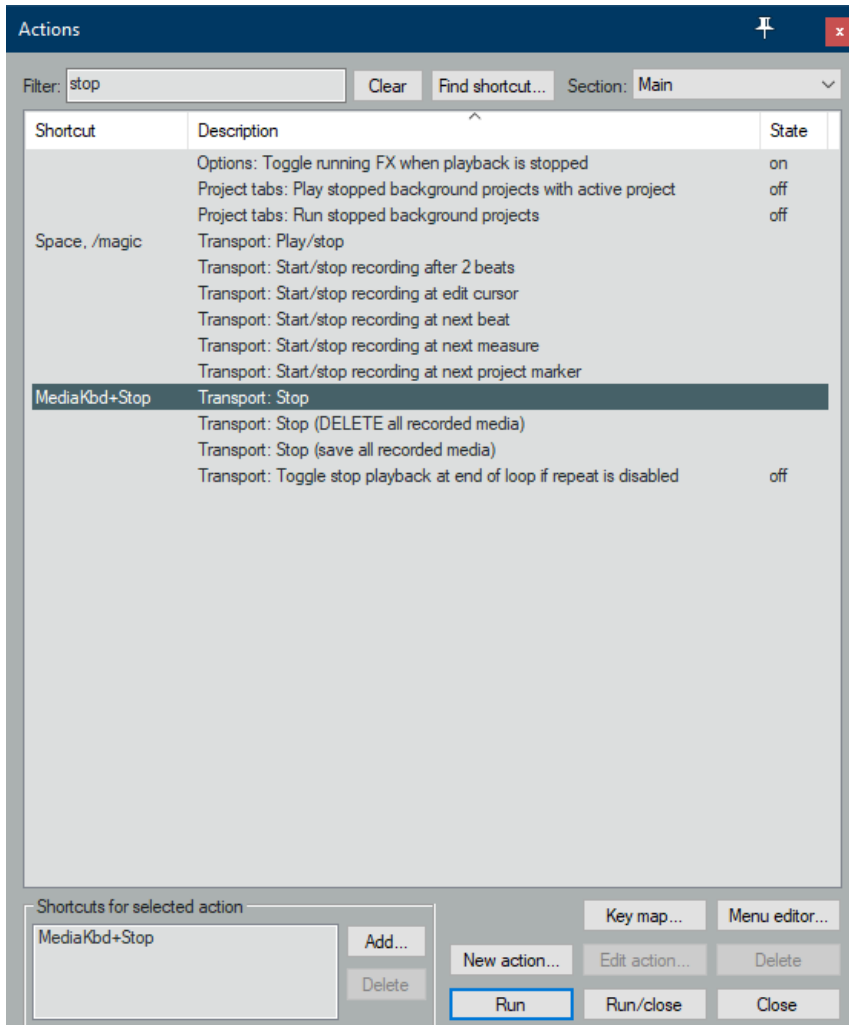
- If you want to connect more than one extension you should redo step 3 and 4 but select **D700 (2)** and **Mackie Control Extender** and set **Surface offset** to **8** (resp. 16, 24, ...)

If there is only one D700 showing up, you need to enable the extensions first. How you can do that is described in the main manual.

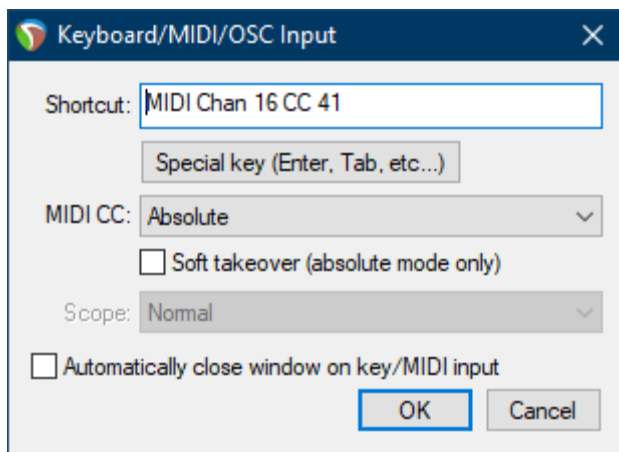


Step 6: (optional)

- To assign all unused buttons go to the **Actions** window
- Select a function and press **Add...**



- Press a button on the D700 to create the shortcut
- Make sure **Absolute** is selected





For more information
visit www.asparion.de